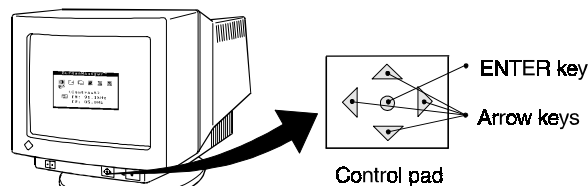


ScreenManager

As shown on the screen, the ScreenManager is used to adjust the monitor. Adjustments are made using the Control pad shown in diagram.



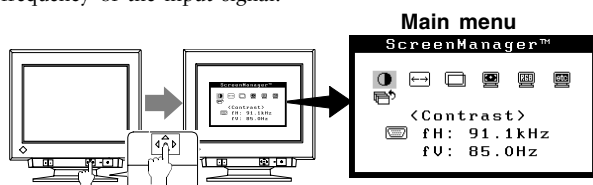
How to use

NOTE

- Allow the monitor to stabilize for at least 30 minutes before making image adjustment.
- Leaving the ScreenManager idle for 45 seconds or more will turn the adjustment off automatically without saving.

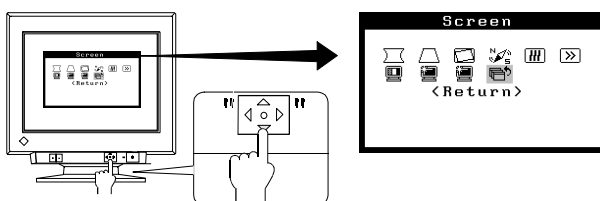
1. Entering the ScreenManager

Press the ENTER key to display the ScreenManager Main menu. Main menu displays the current connector type and frequency of the input signal.



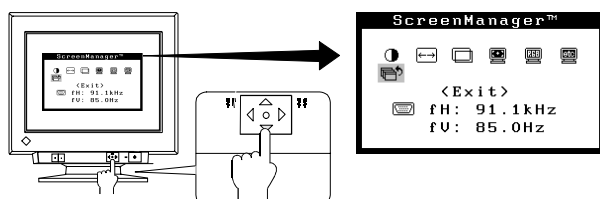
2. Enter the Settings

Use the Control pad (the four arrow keys and the ENTER key) to make the required adjustments and settings.



3. Save & Exit

To return to the previous menu, select the "Return" icon (or push the "down" arrow key twice), then push the ENTER key.




To save settings and exit the ScreenManager, select the "Exit" icon and press the ENTER key.

ScreenManager Menus

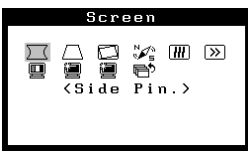


NOTE

- First, select the preferred language through the "Language" function in the ScreenManager "Others" menu.
- Please refer to the User's Manual for more details.

Main menu

	<p>The ScreenManager Main menu consists of Brightness/Contrast, Horizontal/Vertical Size and Position adjustments, and three Sub adjustment menus, Screen, Color and Others.</p>
---	--

Sub menus

	<p>Screen menu</p> <p>Various screen parameters can be adjusted in each display mode to enhance viewing:</p> <p>Side Pin., Trapezoidal, Tilt, Uniformity, Convergence, Moiré Reduction, Fine Contrast, Signal Filter 1 and Signal Filter 2.</p>
	<p>Color menu</p> <p>Standard color with selection of color temperature, color correction and Custom color with adjustment of color tone.</p>
	<p>Others menu</p> <p>Use this menu to configure the following features:</p> <p>PowerManager, Off Timer, Degauss, Button Setting, Beep, Menu Position, Language, Input Priority and Reset to defaults.</p>

Shortcut keys

The brightness and contrast can be adjusted by pressing the "Up", "Down", "Left" and "Right" keys of the control pad directly. Press the "ENTER" of the control pad to save and exit the settings after the adjustment. (The brightness and contrast functions are also available in the ScreenManager "Main" menu.) See the diagram described below for adjustment directions.

